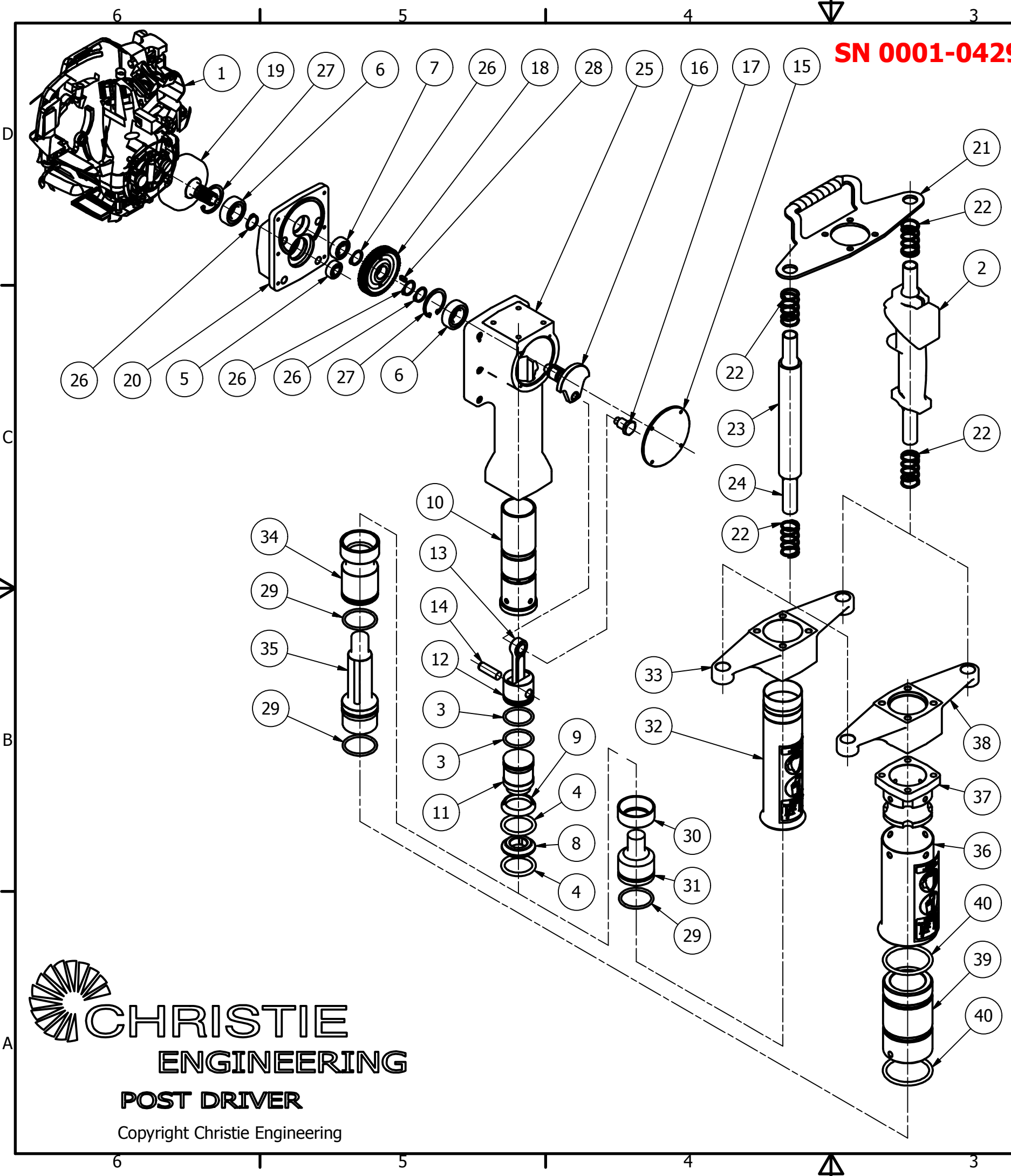


**SN 0001-0429**



CEPD 52/73 PARTS LIST			
ITEM	QTY	PART NUMBER	DESCRIPTION
1	1	GX35	Honda Motor
2	1	17850VL1741	Throttle Lever Assembly
3	2	BS222 OR37.7-3.53V	Viton 'O' Ring
4	2	BS326 OR40.65-5.34	Damper 'O' Ring
5	1	6000-2RS	Deep groove ball bearings
6	2	6004-2RS	Deep groove ball bearings
7	1	6201-2RS	Deep groove ball bearings
8	1	CEPD 20	Hammer Guide
9	1	CEPD 22	Damper Washer
10	1	CEPD 24-1	Steel Cylinder Liner
11	1	CEPD 27	Top Hammer
12	1	CEPD 30	Piston
13	1	CEPD 31	Connecting Rod 01
14	1	CEPD 31-A	Gudgeon Pin 12 x 40
15	1	CEPD 37	Cover Plate
16	1	CEPD 38	Crank Shaft
17	1	CEPD 38 PIN	Crank Pin LH S1214
18	1	CEPD 54-58	58T Driven Gear
19	1	CEPD 60-13	Clutch Drum
20	1	CEPD 67-1	Cast Clutch Housing
21	1	CEPD 920	Handle Mount Top
22	4	CEPD 921	Spring
23	1	CEPD 921-A	Handle Hose
24	2	CEPD 922	Handlebars - 1" Stainless
25	1	CEPD 924	Crank Housing
26	4	DIN 471 - 20x1.2	External Circlip
27	2	DIN 472 - 42 x 1.75	Internal Circlip
28	1	DIN 6885 - A 4 x 4 x 12	Parallel Key

CEPD 52 SPECIFIC PARTS LIST			
ITEM	QTY	PART NUMBER	DESCRIPTION
29	1	BS224 OR44.05-3.53V	Viton 'O' Ring
30	1	CEPD 901	Damper Cup (CEPD 52)
31	1	CEPD 902-2	Bottom Striker (CEPD 52)
32	1	CEPD 904-1	Bottom Guide Tube (CEPD 52)
33	1	CEPD 925	Cast Bottom Housing (CEPD 52)

CEPD 73 SPECIFIC PARTS LIST			
ITEM	QTY	PART NUMBER	DESCRIPTION
29	2	BS224 OR44.05-3.53V	Viton 'O' Ring
34	1	CEPD 906	Hammer Housing (CEPD 73)
35	1	CEPD 907	3rd Hammer (CEPD 73)
36	1	CEPD 914	Bottom Guide Tube (CEPD 73)
37	1	CEPD 908 R2	Flanged Adapter (CEPD 73)
38	1	CEPD 905	Cast Bottom Housing (CEPD 73)
39	1	CEPD 910	Maxi Bush PP (CEPD 73)
40	2	BS333 OR62.87-5.34	Damper 'O' Ring

**CHRISTIE ENGINEERING**  
**POST DRIVER**  
 Copyright Christie Engineering