

## ***user manual***

*Before standing to work, the operator have to read and understand the user manual !  
Please keep these user manual in a safe place!*



product:	designation:	electric chain saw
	Type:	Brickcut ESL 30
manufacturer :	Name:	PRINZ / CARDI

### ***source of supply:***

**PRINZ Deutschland GmbH \* Bahnhofstr. 1 b \* D-01920 Haselbachtal**  
**phone +49 (0)3578 34950 \* fax +49 (0)3578 349517**  
**info@prinz24.com \* www.prinz24.com**

*Please use the spaces below to list the model number and serial number of your product:*

<i>machine serial number</i>	
<i>date of purchase</i>	
<i>distributor</i>	<i>PRINZ Deutschland GmbH</i>
<i>adress</i>	<i>Bahnhofstr. 1 b</i>
<i>postcode/town/country</i>	<i>D-01920 Haselbachtal, Deutschland</i>
<i>phone/fax</i>	<i>+49 (0)3578 34950 / +49 (0)3578 349517</i>

***delivery note:***

***additional notes:***

<i>Chapter</i>	<i>Contents</i>	<i>Page</i>
1	<i>Introduction</i>	4
2	<i>Intended use</i>	4
3	<i>Checks prior to using the machine</i>	5
4	<i>Forbidden whilst operating the machine</i>	5
5	<i>Personal protective equipment</i>	6
6	<i>Safety information</i>	6
6.1	<i>Kickback hazard</i>	8
6.2	<i>Work area</i>	8
6.3	<i>Personal safety</i>	8
6.4	<i>Application and care of the electric tool</i>	9
6.5	<i>Service</i>	9
6.6	<i>Additional safety rules for electric chainsaws</i>	10
6.7	<i>Instructions prior to taking into service</i>	10
6.8	<i>Maintenance, service, guarantee</i>	14
7	<i>Electrical safety</i>	16
	7.1 <i>Electrical connection values</i>	
	7.2 <i>Electrical guidelines</i>	
	7.3 <i>Electrical mains connection</i>	
	7.4 <i>Regular checks</i>	
	7.5 <i>Working safety of the electrical equipment</i>	
8	<i>Fire safety</i>	17
9	<i>General rule for order and cleanliness</i>	17
10	<i>Technical specifications</i>	17
	10.1 <i>Workplace description</i>	
	10.2 <i>Technical data</i>	
11	<i>Illustrations</i>	18 -22
12	<i>Spare parts drawings</i>	23
13	<i>Disposal</i>	24
14	<i>Declaration of conformity</i>	24

## **1 INTRODUCTION**

*The following operating instructions are to be thoroughly read and understood by every operator prior to commencing work with the machine. The operating instructions must be accessible to every operator. Lack of knowledge in handling and operating the machine can lead to damage or severe injury. The guarantee is likewise nullified.*

*The document contains all the important safety advice and information necessary for operating the machine as well as technical data and advice on care and maintenance. Many years of experience have gone into the design and production in order to provide you with a modern product with the maximum economy and safe operating characteristics. All the following advice must therefore be heeded carefully.*

*We recommend that the company or supervising staff give instruction to the operating personnel based on these operating instructions and that they leave a copy with the operators as well as a copy for safe keeping in the event of loss. Please contact your dealer should you have any queries and also for further copies of this document.*

## **2 INTENDED USE**

*The machine is a powerful tool for straight separating cuts in hollow bricks, Poroton, Tuff, porous concrete blocks, Ytong, solid brick and soft stone, amongst others. A further important area of application is for producing of horizontal saw cuts in masonry mortar joints for the stepwise insertion of a horizontal seal against rising damp in old buildings. The cut is normally made from right to left because in this cutting direction the saw is pulled into the cut which means greater working safety for the operator. For this purpose, always use only the carbide chains type HMS 0.404" or HMS 0.5" recommended by the manufacturer.*

*Uses other than those described above do not comply with the purpose for which the machine is intended and are in principle forbidden.*



*It is imperative that you read the instructions in connection with this warning sign. They contain important safety information!*

### **3 CHECKS PRIOR TO USING THE MACHINE**



- *Before commencing work with the saw the operator must satisfy themselves that the machine is in a sound, operationally reliable and undamaged condition and that no danger to the health of the operator is present.*
- *Otherwise the product may not be used and the supervising staff or the company responsible must be notified of possible defects.*

### **4 THE FOLLOWING IS FORBIDDEN WHEN THE MACHINE IS IN OPERATION:**



- *. Starting up the machine and cutting masonry without the awareness of the presence of electrical cables, water and waste water pipes as well as gas and other pipelines which could be damaged by the saw.*
- *Starting up the machine despite the knowledge of faults and defects on the machine, on the power cable and/or statutory safety equipment.*
- *Operating the machine under the influence of alcohol, medication or other agents which could compromise concentration and the ability to react.*
- *Starting up the machine and cutting masonry when unauthorised persons or children are present within the danger zone.*
- *Attempting to eliminate or gather up operational machine cutting waste or residue within the danger zone.*
- *Touching or retensioning the cutting fixture on the machine (saw chain) without isolating from the mains current.*
- *Leaving the workplace without securing the machine against unauthorised switching on by undertaking suitable measures (e.g. removing the power line, locking away etc.).*
- *Bypassing existing guarding equipment.*
- *Undertaking maintenance, care and repairs on the machine when running.*
- *Contravening existing work safety regulations*

## 5 PERSONAL PROTECTIVE EQUIPMENT



- The operator is obligated, depending on the type and requirement of the work, to observe the provisions of the Health and Safety Act and to use their personal protective equipment (protective gloves, ear protectors, safety glasses, dust masks).
- The basic health and safety provisions (e.g. the provisions of the industrial injuries compensation boards) for working on building sites remain unaffected by these instructions.

## 6 SAFETY INFORMATION



### **WARNING !**

**Rotating or moving parts of the machine (e.g. saw chains) can cause severe or even fatal injuries.**

**Installation, connection, taking into service/test runs as well as maintenance and repair may only be carried out by qualified personnel taking into account the following provisions:**

- All the above itemised provisions of these operating instructions.
- Current applicable regulations and provisions for safety and accident prevention.
- The operator must be older than 18 years of age.
- The operator must be mentally and physically healthy, rested and unhurt.
- A work group consists of at least 2 employees.
- Handling or moving the machine between individual workplaces may only take place after shutting down and isolating from the mains current.
- The workplace is to be provided with a warning sign "Entry forbidden to unauthorised persons". Where necessary, a barrier with hazard warning tape or a hoarding is to be set up so that non-participants cannot accidentally or inadvertently enter the danger zone.
- Check before commencing the work that all safety equipment is properly functioning.
- During operation, the operator must always position themselves behind the machine (at the opposite end to the bar and chain) and monitor the cutting process attentively and without interruption. The operator must always have visual contact with their co-workers in order to be able to react immediately to unforeseen circumstances.
- One worker monitors the rear of the wall being cut and is in constant contact with the operator (where appropriate via agreed acoustic signals, hand signals or radio).
- Due to the possibility of severe dust and dirt build-up the operator is to check the condition of the moving parts from time to time during operation and if necessary clean and re-grease (in particular the guide roller on the bar, drive pinion).
- Further repairs, in particular intervention in the electrics, may not take place on site and may only be carried out by trained fitters.

- *The maintenance and repair personnel must likewise be familiar with the provisions in these operating instructions.*
- *Safety signs and lettering on the machine are always to be kept legible and to be renewed if necessary.*
- *Losses of oil or grease from the machine are to be avoided or eliminated immediately in an environmentally responsible manner.*
- *Only use the machine in adequate light conditions or provide for adequate illumination of all work areas.*
- *To repair and replace defective parts, instruct your dealer or a trusted repair shop which is qualified for this work. In such cases, insist on the use of the manufacturer's original parts: only in this way can faultless, safe and smooth operation of the machine be guaranteed.*
- *Do not expose the electrical tool to rain or wetness.*

## 6.1 Kickback hazard

*The kickback is one of the most dangerous safety hazards when freehand cutting with chainsaws. It occurs when the rotating chain at the point of the bar guide contacts the material being sawn at a right or obtuse angle. In doing so a sudden, abrupt movement of the saw against the direction of the chain rotation takes place, or even in the direction of the operator, which the operator is scarcely able to control thus inducing a dangerous situation.*

*This action can lead to loss of control and increase the risk of injury. You should not rely exclusively on the safety devices built into the saw. The kickback can be avoided by taking the following measures:*

- *Keep a firm grip (Fig. 3) by grasping the chainsaw handles with the thumb and fingers of both hands and keeping the body and arms in a position which enables you to resist a kickback. The kickback forces can be better coped with by the operator if appropriate precautions are taken. Do not let the chainsaw get out of control.*
- *Do not overextend yourself and do not saw above shoulder level. This will prevent inadvertent point contact and enable better control over the chainsaw in unexpected situations.*
- *Only use the bars and chains approved by the manufacturer. Incorrect spare parts can mean additional risks when using the saw as well as the required performance parameters not being achieved under certain conditions. Moreover, the use of non-approved parts can lead to damage or even the destruction of the machine.*
- *Please observe the manufacturer's instructions on sharpening and upkeep as well as lubricating the saw chain*

## 6.2 Work area

- *Keep working area clean and well lit. Cluttered and dark areas invite accidents.*
- *Do not operate power tools in explosive atmospheres, such as in the presence of flammable liquids, gases or dust. Power tools create sparks which may ignite the dust or fumes.*
- *Keep children and bystanders away while operating a power tool. Distractions can cause you to lose control.*

## 6.3 Personal safety

- *Stay alert, watch what you are doing and use common sense when operating a power tool. Do not use a power tool while you are tired or under the influence of drugs, alcohol or medication. A moment of inattention while operating power tools may result in serious personal injury.*
- *Use safety equipments: always wear eye protection. Safety equipment such as dust mask, non-skid safety shoes, hard hat, or hearing protection used for appropriate conditions will reduce personal injuries.*
- *Avoid accidental starting. Ensure the switch is in the off position before plugging in. Carrying power tools with your finger on the switch or plugging in power tools that have the switch on invites accidents.*



- *Remove any adjusting key or wrench before turning the power tool on. A wrench or a key left attached to a rotating part of the power tool may result in personal injury.*
- *Do not overreach. Keep proper footing and balance at all times. This enables better control of the power tool in unexpected situations.*
- *Dress properly. Do not wear loose clothing or jewellery. Keep your hair, clothing and gloves away from moving parts. Loose clothes, jewellery and long hair can be caught in moving parts.*
- *If devices are provided for the connection of dust extraction and collection facilities, ensure these are connected and properly used. Use of these devices can reduce dust related hazards.*
- *Use auxiliary handles supplied with the tool. Loss of control can cause personal injury.*

#### **6.4 Application and care of the electric tool**

- *Do not force the power tool. Use the correct power tool for your application. The correct power tool will do the job better and safer at the rate for which it was designed.*
- *Do not use the power tool if the switch does not turn it on and off. Any power tool that cannot be controlled with the switch is dangerous and must be repaired.*
- *Disconnect the plug from the power source before making any adjustments, changing accessories, or storing power tools. Such preventive safety measures reduce the risk of starting the power tool accidentally.*
- *Store idle power tools out of the reach of children and do not allow persons unfamiliar with the power tool or these instructions to operate the power tool. Power tools are dangerous in the hands of untrained users.*
- *Maintain power tools. Check for misalignment or binding of moving parts, breakage of parts and any other condition that may affect the power tools operation. If damaged, have the power tool repaired before use. Many accidents are caused by poorly maintained power tools.*
- *Keep cutting tools sharp and clean. Properly maintained cutting tools with sharp cutting edges are less likely to bind and are easier to control.*
- *Use the power tool, accessories etc., in accordance with these instructions and in the manner intended for the particular type of power tool, taking into account the working conditions and the work to be performed. Use of the power tool for operations different from intended could result in a hazardous situation.*

#### **6.5 Service**

- *Have your power tool serviced by a qualified repair person using only identical replacement parts. This will ensure that the safety of the power tool is maintained.*

## 6.6 Additional safety rules for electric chainsaws



*Always wear safety goggles*



*Always wear safety gloves*



*Always wear ear protection*



*Always wear safety shoes*



*Always wear dust mask*

- *Keep all parts of the body away from the saw chain when the chainsaw is operating. Before you start the chainsaw, make sure the saw chain is not contacting anything. A moment of inattention while operating chainsaws may cause entanglement of your clothing or body with the saw chain.*
- *Always hold the chainsaw with your right hand on the rear handle and your left hand on the front handle. Holding the chainsaw with a reversed hand configuration increases the risk of personal injury and should never be done.*
- *Wear safety glasses and hearing protection. Further protective equipment for head, hands, legs and feet is recommended. Adequate protective clothing will reduce personal injury by flying debris or accidental contact with the saw chain.*
- *Always keep proper footing and operate the chainsaw only when standing on fixed, secure and level surface. Slippery or unstable surfaces such as ladders may cause a loss of balance or control of the chainsaw.*
- *Carry the chainsaw by the front handle with the chainsaw switched off and away from your body. When transporting or storing the chainsaw always fit the guide bar cover.*
- *Proper handling of the chainsaw will reduce the likelihood of accidental contact with the moving saw chain.*
- *Follow instructions for lubricating, chain tensioning and changing accessories. Improperly tensioned or lubricated chain may either break or increase the chance for kickback.*
- *Keep handles dry, clean, and free from oil and grease. Greasy, oily handles are slippery causing loss of control.*
- *Do not use chainsaw for purposes not intended. For example: do not use chainsaw for cutting plastic, concrete or wood materials. Use of the chainsaw for operations different than intended could result in a hazardous situation.*

## 6.7 Instructions prior to taking into service



***Read carefully the data written on the Technical Data sheet that you will find in the package together with your product.***

## **Power supply**

### **Extension cords**

- when you have to operate with your chainsaw far from an electrical outlet, you can use an extension cord. If you use it make sure that the section of the cord is suitable and that the cord is provided with ground conductor;
- the extension cord (made up of cable, plug and socket) must be suitable for outdoor use. It is better if the cord is made of rubber and it is H07RN-F;
- follow the chart shown in figure 11 on this manual or the choice of the right section of the conductors;
- if you use more than one extension cord make sure that every cable in each extension cord has a section not lower than the value shown on the chart in figure 11, considering the total length of the extension cords;
- remember the longer an extension cord the higher the drop in voltage. This causes loss of rpm and therefore cooling as well as loss of power operating your chainsaw. Don't use extension cords if you have to operate too far from the electrical outlet.

## **Mechanical chain brake**

Your electric chainsaw is endowed with a mechanical chain brake. The chain brake is a safety device for stopping or locking the saw chain when kickback occurs. The mechanical chain brake is operated by the chain brake lever (C). The chain brake lever has two positions (fig.5):

- "open", in back position, where the tool can work;
- "active", in front position, where the chain is blocked.

The chain brake is activated when the hand or the wrist of the operator put pressure on the chain brake lever until it snaps into "active" position. When the chain brake operates the saw chain blocks. To resume cutting operations, release the ON/OFF switch and pull the chain brake lever in "open" position.

## **ON/OFF switch**

See figure 4 in order to understand how to use the switch (figure 2 E). Your switch is equipped with a safety lock device. With this device you can switch on the motor only if you follow first step I and then step II, as shown in figure 4. This prevents the chainsaw from starting accidentally.



**Caution:** after switching off, the machine will not be idle immediately.

## **Chain and guide bar**



**Warning:** Do NOT use wood saw chains or other kind of chains not proper for your electric chainsaw. Failure to follow this warning may result in serious personal injury.

## Chain and guide bar mounting and replacement



Before mount or replace the guide bar (A) or the chain (B), unplug the plug from the socket. Use proper safety gloves in order to avoid injuries touching the chain. Put the electric chainsaw on a clear and stable surface. As equipped, the chain is lubricated automatically via the built-in oil pump. Using regular chain oil containing adhesive components may cause different problems while cutting mineral building materials (extended pollution and stretching of chain, wear of bar, sprocket and pulley due to bonded saw dust). Experience has shown that it is more efficient to cut without automatic lubrication but maintain the chain by putting some protective spray (e.g. WD40) on it in working breaks, start and end of work.

For chain mounting and replacement refer to figure 7. Operate as follow:

- loosen and remove the carter-tightening nuts (7/A) using the key provided;
- remove the carter (7/B);
- remove the upper steel plate (7/C);
- fit the chain around the guide bar being careful to rotation sense of the teeth (fig.8) and keeping it taut so that it adheres to the bar in order to have the chain savings in the back of the guide bar (7/ D);
- fit the chain around the drive sprocket and fit the bar with the pins. Be sure that the chain tightener pin is fitted in the tightening hole (7/E);
- hold the guide bar and fit the carter (7/F);
- fit the nuts on the carter and tighten slightly (7/F) so you can procede with chain tightening operations;
- screw clockwise the chain tightener screw (7/G) until the chain is tightened; the chain is well tightened if you can pull away from the guide bar for 5 mm and it returns on the guide bar when you release it.
- The chain must run free pulling it with your hand;
- firmly tighten the chain-tightening nuts (7/H).

## Drive sprocket mounting and replacement



Before mount or replace the drive sprocket, unplug the plug from the socket. Put the electric chainsaw on a clear and stable surface.

- Follow the instructions on the section "Chain and guide bar mounting and replacement" to remove the guide bar and the chain;
- use a clamp (better if "water pump pliers with box joint" type to hold the sprocket (9/A);
- loosen and remove the drive sprocket clamping nut(9/B – 9/C);
- if it's present, remove the washer (9/D);
- remove the drive sprocket (9/E);
- if it's present, remove the other washer;
- clean the drive sprocket housing;
- proceed backwards: mounting the washer (if it's present), the new drive sprocket (that must perfectly fit the shaft), the other washer and the drive sprocket clamping nut;
- using the clamp, hold the drive sprocket and tight the nut;

### **Environmental conditions**

- prevent water or any other liquid from coming into contact with the electrical parts of your machine;
- do not use the chainsaw in explosive atmospheres, for instance flammable liquids, gas or dust. The electric chainsaw produces sparks which can ignite fumes, dust or smoke.

### **Overhead cutting (ceiling cutting)**



**Warning:** your chainsaw is NOT intended to perform overhead cutting (upward).

### **Operating Instructions**

After having followed the instructions given in the previous Preliminary operations section, proceed as follows in order to perform the cut:



**Warning:** do not touch any moving parts of your chainsaw, in particular the blade, when operating.

- Unplug the plug from the socket and check the chain tightness;
- check if the chain brake lever is in "open" position;
- plug the plug in the socket. Put both hands on the chainsaw handles. Be sure that the chain can't touch anything. Operate the ON/OFF switch;
- your electric chainsaw is equipped with a soft-start device. The soft-start allows the motor to start gradually, allowing gradual chain rotation. The chain reaches his maximum speed after 1-2 sec.;
- move the electric chainsaw just forward and avoid friction between the guide bar sides and the working piece. The friction can overload the motor;
- to turn off the electric chainsaw you have to release the ON/OFF switch.
- **Warning:** When working, make sure you stand safely. Always hold your machine with both hands. The chain can jam, so be always ready to face this event: the electronic of your machine allows you to move the machine out, to free the blade and to continue cutting.
- For your safety maintain a firm grip on the handles with both two hands, as shown in fig.3. Be ready to face your electric chainsaw movements;
- when you complete the cut, switch off your electric chainsaw and wait till the chain comes to a complete stop. Then pull the chainsaw;
- watch out! The chain and the cutting area can be very hot

### **examples of use**

cutting of hollow bricks, Poroton, tuff etc.:

- put the brick on a solid and clear surface;
- turn on your machine and let the chain reach his maximum speed;
- with both hands on the handles, push the spiked bumpers on the brick to be cutted and push the bar into the material. If necessary, use the spiked bumpers as a guide and lever point. Let the chainsaw do the job. Don't push too much: chain, guide bar and electric chainsaw work better if are not overloaded. In normal conditions the cut of a brick can take 2-3 seconds;
- when you finish the cut don't let the chain touch the ground or other things in the work area;

- *be careful that the material you're cutting doesn't collapse on the guide bar during the cut; usually this doesn't happen but it's better to be careful;*

*generation of passage, windows, doors, etc. into lapideous material:*

- *your electric chainsaw can create openings into bricks wall, hollow bricks wall, tuff wall etc. using the "plunge cut" technique;*
- *clear the working area;*
- *never start the plunge cut with the guide bar tip;*
- *be sure that on the wall there are no obstacles according to your electric chainsaw cutting depth;*
- *be sure that no one is behind the wall you're going to cut;*
- *turn on your machine and let the chain reach its maximum speed;*
- *with both hands on the handles, push the bottom part of the chain on the material to be cut. Approach using a 30° - 40° angle between the guide bar and the material;*
- *slowly penetrate the guide bar into the material till you pass it through, gradually reduce the angle of cut;*
- *after 30-40 cm you should have the guide bar perpendicular to the material; proceed in your cut activity. Don't overload the electric chainsaw;*
- *"plunge cut" can be performed horizontally and vertically. When you cut horizontally take care that the material doesn't push on the guide bar sides. Cut before horizontally when you perform doors and windows openings.*

#### **safety installations of the chain saw**

- *the soft-start allows the motor to start gradually, reducing peak current that occurs when you switch the motor on, helps you when you begin cutting, allowing gradual chain rotation and avoiding jerks at the operator's arm. It allows you to use your chainsaw connected to household electrical outlet.*
- *the electronic clutch cuts off power to the motor in case of excessive overload, increasing the operator safety and preventing damage to the motor. When the overload is over, the device gives back power to the motor that begins working again;*
- *if the electronic clutch operates frequently means that the chainsaw is not used properly.*

## **6.8 Maintenance - Service – guarantee**

### **Periodic maintenance**

- *at the end of the work, after having removed the blade, blow compressed air inside the rotating motor in order to remove dust and powder. Do this operation wearing protective goggles;*
- *before starting any other cleaning, maintenance or lubrication operation make sure that the chainsaw is unplugged;*
- *keep your chainsaw clean and dry, in particular its handles and its moving parts;*
- *never use solvents or other harsh chemicals for cleaning your chainsaw;*
- *after use put your chainsaw in a dry, safe place inaccessible to children place;*
- *gears are lubricated by lubricating oil and grease which are suited for any external temperature. You don't have to check the oil level or to fill it up. always unplug the chainsaw during check or blade replacement;*
- *never unplug the chainsaw by pulling the cord;*



- *inspect often the power cable and extension cords, making sure that they don't have any damage like cuts, abrasions or exposed wires. If you find a damage, ask to a PRINZ authorized service centre for replacement;*
- *do not use the chainsaw with damaged components or with malfunctions, in particular when the switch doesn't work properly. In these cases, ask a PRINZ authorized service centre for replacement.*

### **Service**

- *after 250 hours of work, bring your chainsaw to a PRINZ authorized service centre for periodical check;*
- *any repairing on your chainsaw must be carried out by PRINZ authorized service personnel only. Ask your dealer for the list of the PRINZ authorized service centres;*
- *your machine's serial number is stamped on the machine or printed on the data plate as shown in figure 7;*
- *use original PRINZ spare parts only.*

### **Guarantee**

- *Your product is under PRINZ warranty for 12 months, starting from the date of purchase. This warranty is against faulty workmanship, flaws in material and design problems. The warranty covers free components replacement, manpower needed for replacement and wearing materials such as oil and lubricants if intact before the repairing operation.*
- *The warranty doesn't cover the replacement of:*
  - *components of the product replaced or modified by people not authorized by PRINZ;*
  - *components damaged by carelessness, not suitable use or overloaded;*
  - *components of products from which safety devices have been removed;*
  - *worn out wearing parts replaced during repair.*
- *This warranty does not apply to products that have been damaged by carelessness like water entering the chainsaw, lack of periodic cleaning and maintenance, damage of the threaded components or the spindle etc.*
- *The life of wearing parts is variable depending on using time and the kind of job they are used for. Examples of wearing parts are: cables, switches and plugs, brushes, armatures, clutch plates, ball and roller bearing not in oil, sealing rings, transmission spindles, filters, etc.*
- *If during repairing under warranty, a wearing part is worn and this can affect the safety and the operation of your product, the customer is asked to pay for the replacement of these components not under warranty. If the customer refuses this, no repairing operation will be carried out.*
- *The warranty covers free replacement of components which are defective due to wrong manufacturing or assembly, if the product is brought to an authorized service centre and if:*
  - *the product is together with a purchasing document stating when the product has been purchased. Valid purchasing documents are invoices or delivery certificates including serial numbers;*
  - *maintenance operations have been carried out every 250 working hours, replacing the worn wearing parts;*
  - *no unauthorized people have operated on the product;*
  - *the product has not been misused and it has been used accordingly with the directions given in this user manual;*
  - *all safety directions have been followed.*
- *Your CARDI product is not under warranty if:*

- *the product has been serviced by people not authorized by PRINZ.*
- *damages are due to incorrect use and/or carelessness. Dents due to drops or strokes will be considered evidence of carelessness;*
- *damages have been caused by mechanical or electrical overload;*
- *damages have been caused by water, mud or any other liquid entering the product.*

### **User-replaceable components**

- *No components of your PRINZ product can be replaced by the user. Replacement must be carried out by PRINZ authorized personnel only.*
- *Excepted from this are guide bar, chain, sprocket, bar bolts, chaintensioning screw and the side cover.*
- *Ask your dealer for a PRINZ service centres address list.*

## **7 ELECTRICAL SAFETY**

### **7.1 Electrical connection values**

Voltage	230V
Frequency	50 Hz
Max. current	16 A

### **7.2 Electrical guidelines**

*The machine complies with the EN 60745-1 directive.*

### **7.3 Electrical mains connection**



*The available operating voltage and frequency must conform to that specified on the nameplate. This must be heeded particularly in the case of foreign mains currents. The intended function of the machine can only be guaranteed to a deviation of approx. 10% of the nominal supply voltage value.*

### **7.4 Regular checks**



*The entire electrics must be examined and documented after maintenance and also rotationally in accordance with the statutory regulations of the country of destination.*

### **7.5 Working safety of the electrical equipment**



*The machine may only be operated by qualified personnel. Equally, planned regular maintenance of the equipment is to be carried out and documented. Work on the electrical equipment may only be carried out by specialist electricians. This guarantees the permanent electrical safety of the machine.*



## 8 FIRE SAFETY



To prevent combustion or fires, the user is obligated in accordance with the statutory provisions to keep ready adequate approved extinguishing media on site. These must be approved for the extinguishing of fires on electrical plant.



- It is forbidden to extinguish fire on electrical plant which is under live voltage using water or foam! Electric shock hazard!
- The risk of fire is increased with heavy dirt build-up and deposits of dust and dampness as well as combustible fluids such as oil and grease.

## 9 GENERAL RULE FOR ORDER AND CLEANLINESS



- Order and cleanliness in the work place minimises the risk of injury and accidents as well as fire and damage to the equipment.

## 10 TECHNICAL SPECIFICATIONS

### 10.1 Work place description

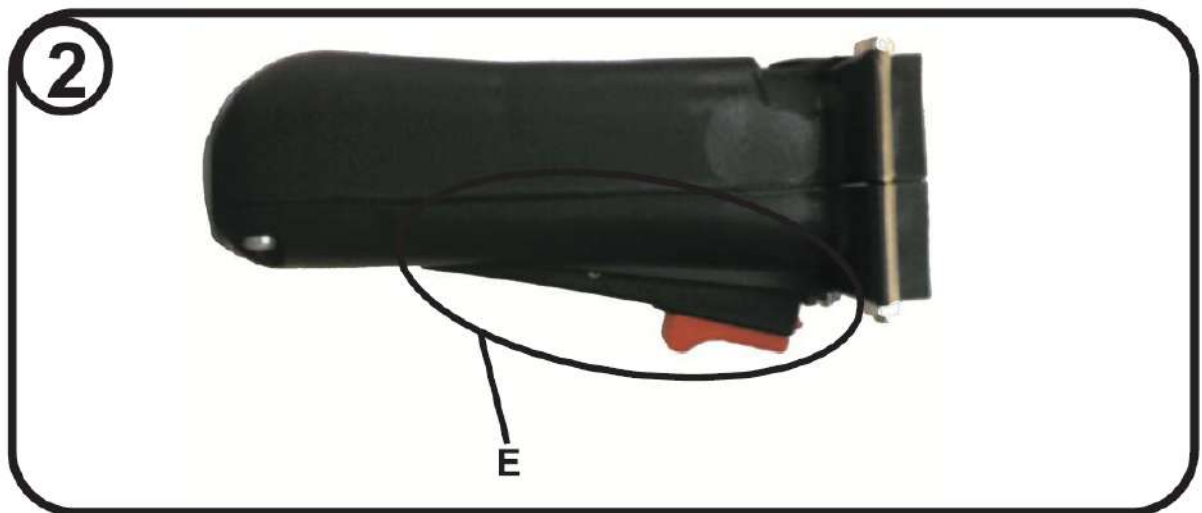
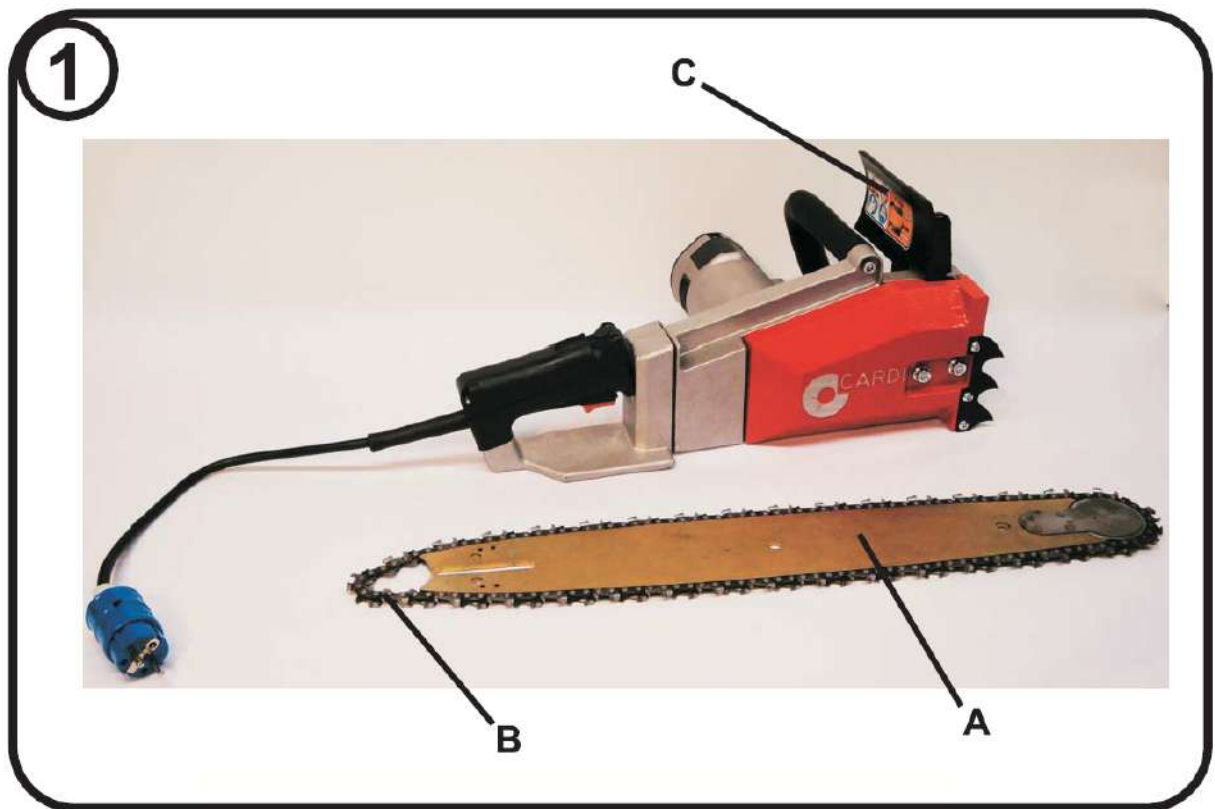
The Prinz electric chain saw Brickcut ESL 30 is a masonry saw.

### 10.2 Technical data

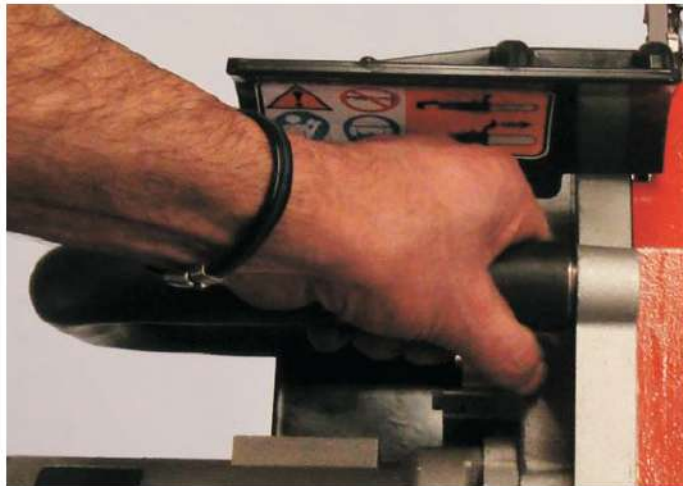
<b>technical data</b>		
<b>description</b>	<b>unit</b>	<b>value</b>
Length without guide bar	mm	500
wide	mm	260
high	mm	240
electric	-	230 V, AC, 50 Hz,
power	kW	3
RPM	min-1	1550
noise	dB(A)	Max. 93

guide bars	chain type / links
40 cm	HMS .404" / 59
50 cm	HMS .404" / 68
60 cm	HMS .404" / 77

## 11 ILLUSTRATIONS



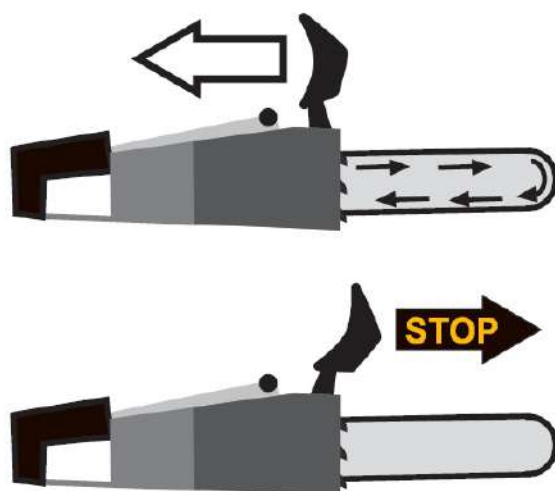
3



4



5



6

SERIAL #



**7**

**7/A**



**7/B**



**7/C**



**7/D**



**7/E**



**7/F**



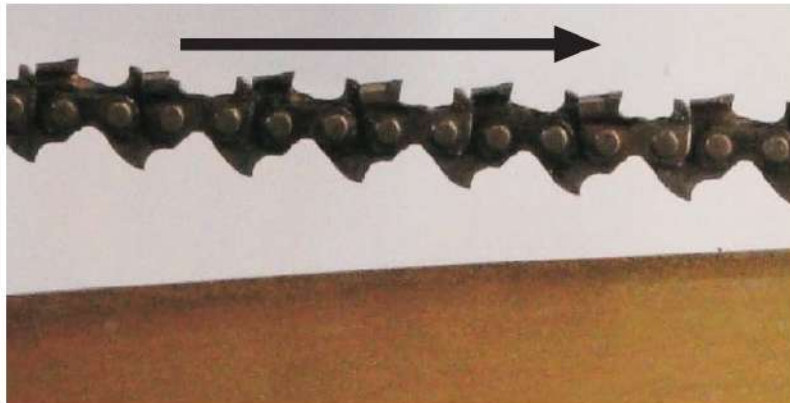
**7/G**



**7/H**



8



9

9/A



9/B



9/C



9/D

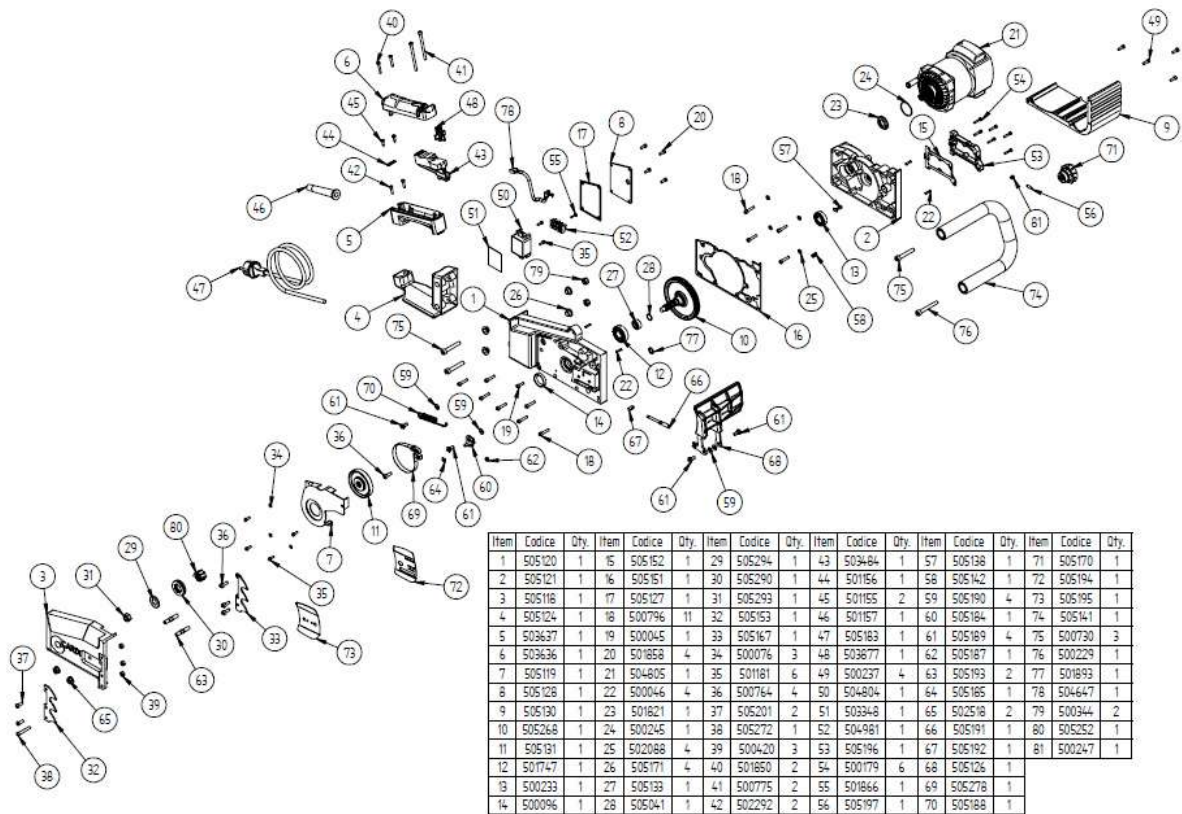


9/E

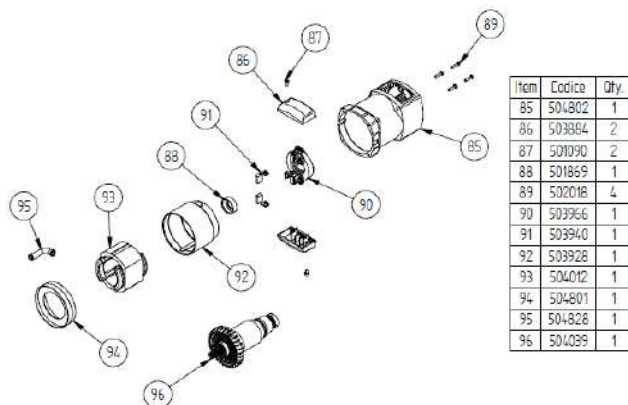




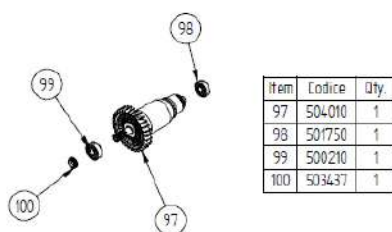
## 12 Spare parts drawings



Item 21 - 504805



Item 96 - 504039



## **13 Disposal**



**2005** The symbol on the left, that you can find on the product or on its packaging indicates that this product may not be treated as household waste. At the end of its life the products must be handed over to the applicable collection point for the recycling of electrical and electronic equipment. Be sure that this product is disposed correctly. You will help prevent potential negative consequences for the environment and human health. For more detailed information about what to do when your product doesn't work and is not fixable, contact the dealer where you did purchase the product.

Your product has been introduced new on the market after August 13th 2005.

This manual is subject to modifications without notice.

## **14 Decleration of conformity**